



# WAIPAPA

## Sites of Significance Management Plan

TS003

# WAIPAPA

Type of Site	Block Location (Tuaropaki E/Pouakani B1 etc.)	Amalgamated to Tuaropaki E Lands (Y/N)	Used by the Trust (Y/N)	GPS Co-ordinates for Site Access Point	Size (Approx.)
Urupā (Waahi tapu)	Tuaropaki E	Y	N	-38.4958699° 175.9030009°	Area = 0.17 ha Perimeter = 0.17 km

### ASSOCIATIONS SITE IS LISTED WITH:

Taupō District Council	Listed as a Significant Natural Area (SNA)	Heritage New Zealand	NZ Archaeological Association
	Not Listed	Not Listed	Not Listed

### CURRENT RISK ASSESSMENT (1 = easy access - 5 = hard access)

Number on Map	Site Access (1-5)	Weather Dependent Access (Y/N)	Gradient & Terrain from Public Road	Biosecurity Risk (1-5)	Unintended risk of people accessing site once location is known (1-5)	Overall Risk Assessment
3	4	Y	1.5 km farm track, 200 m incline is 30°, slippery and muddy in wet weather	4	3	4.2

Name	Specific Risk Assessment	Overall risk outcome
Waipapa Urupā	Level of fitness: Low Additional notes: Site can be viewed from 4x4. No walking required.	Medium

### SCHEDULED VISITS/MAINTENANCE:

Reason for Visit	Responsibility	Tasks to Undertake	Frequency
Site Maintenance	Farm Staff	Mowing	Six monthly - November & May
Site Maintenance	Farm Staff	Spraying the fence lines	Six monthly - November & May
Site Maintenance	Farm Staff	Fencing Upkeep	As required
Site Review	C&L Team	Visit, Assess & Report	Six monthly

# WAIPAPA

## KARAKIA

### **Te Reo Rangatira / The Maori Language:**

Kia tau te manaakitanga ki runga ki tēnā  
ki tēnā o tātau

Kia whakairia te tapu

Kia wātea ai te ara

Kia turuki whakataha ai

Kia turuki whakataha ai

Haumi e!

Hui e!

Taiki e!

### **Te Reo Pakeha / English:**

Settle care and protection upon each of  
us

Move the restrictions of sacredness

So that the pathway may be clear

Set aside personal issues and grievances

Set aside personal issues and grievances

Gather it!

Bind it!

It is done!

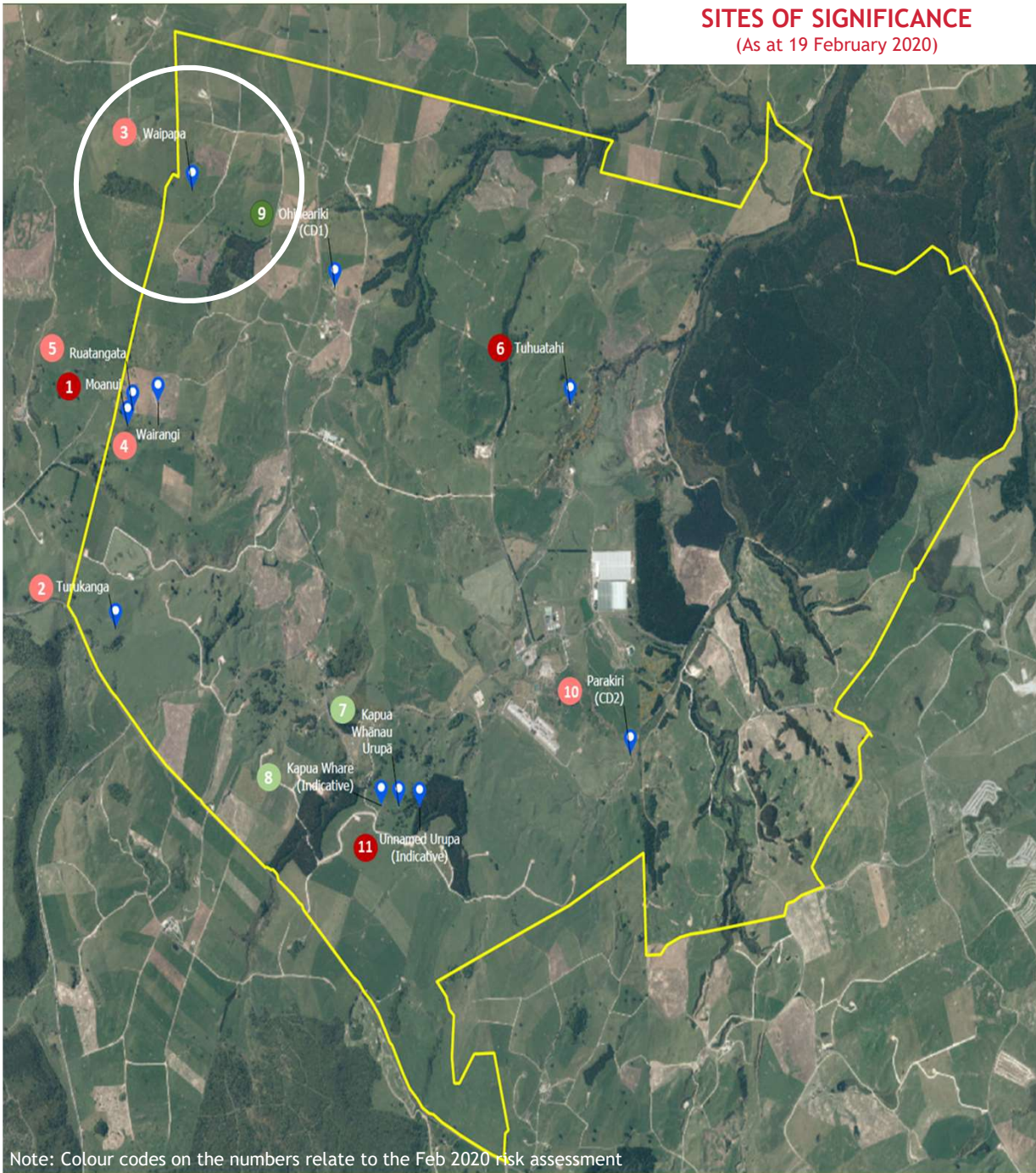


## HISTORY

Waipapa was a kainga or settlement that derived its name from the whenua it was built on. The lands of Waipapa were said to be fertile, the forests full of manu and the awa full of fish. In addition to being in a prime location for hunting, the settlement also consisted of an urupā or sacred burial grounds. This urupā still remains today. Waipapa was also said to be where prominent Ngāti Te Kohera rangatira, Hitiri Te Paerata, had lived after moving from Hapotea.



## SITES OF SIGNIFICANCE (As at 19 February 2020)



Note: Colour codes on the numbers relate to the Feb 2020 risk assessment

