



TE MOMO WHĀNAU URUPĀ

Sites of Significance Management Plan

TS007

TE MOMO WHĀNAU URUPĀ

Type of Site	Block Location (Tuaropaki E/Pouakani B1 etc.)	Amalgamated to Tuaropaki E Lands (Y/N)	Used by the Trust (Y/N)	GPS Co-ordinates for Site Access Point	Size (Approx.)
Urupā (Waahi tapu)	Tuaropaki E or C?	Y or N?	N	-38.5321314° 175.9109706°	Area = 0.0043 ha Perimeter = 0.03 km

ASSOCIATIONS AND ENTITIES SITE IS LISTED WITH:

Taupō District Council	Listed as a Significant Natural Area (SNA)	Heritage New Zealand	NZ Archaeological Association
	Not Listed	Not Listed	Not Listed

CURRENT RISK ASSESSMENTS (1 = Easy - 5 = hard)

Number on Map	Site Access (1-5)	Weather Dependent Access (Y/N)	Gradient & Terrain from Public Road	Biosecurity Risk (1-5)	Unintended risk of people accessing site once location is known (1-5)	Overall Risk Assessment
7	3	N	890 m drive by 4WD, otherwise park at 750 m and walk 140 m	3	2	2.2

Name	Specifi Risk Assessment	Overall risk outcome
Te Momo Whaanu Urupaa	Level of fitness: Low Additional notes: short walk on uneven terrain.	Low

SCHEDULED VISITS/MAINTENANCE:

Reason for Visit	Responsibility	Tasks to Undertake	Frequency
The Urupā is fully fenced off and is located on Tuaropaki Trust lands. Maintenance and monitoring of the site was approved by Trustee Charlie and will be carried out by the culture and legacy team and farm staff.			
Site Maintenance	Farm Staff	Weeding/Spraying/Fencing Upkeep	As required / Quarterly
Site Review	C&L Team	Visit, maintenance assessments & Report	Six monthly

TE MOMO WHĀNAU URUPĀ

KARAKIA

Te Reo Rangatira / The Maori Language:

Kia tau te manaakitanga ki runga ki tēnā
ki tēnā o tātau

Kia whakairia te tapu

Kia wātea ai te ara

Kia turuki whakataha ai

Kia turuki whakataha ai

Haumi e!

Hui e!

Taiki e!

Te Reo Pakeha / English:

Settle care and protection upon each of
us

Move the restrictions of sacredness

So that the pathway may be clear

Set aside personal issues and grievances

Set aside personal issues and grievances

Gather it!

Bind it!

It is done!

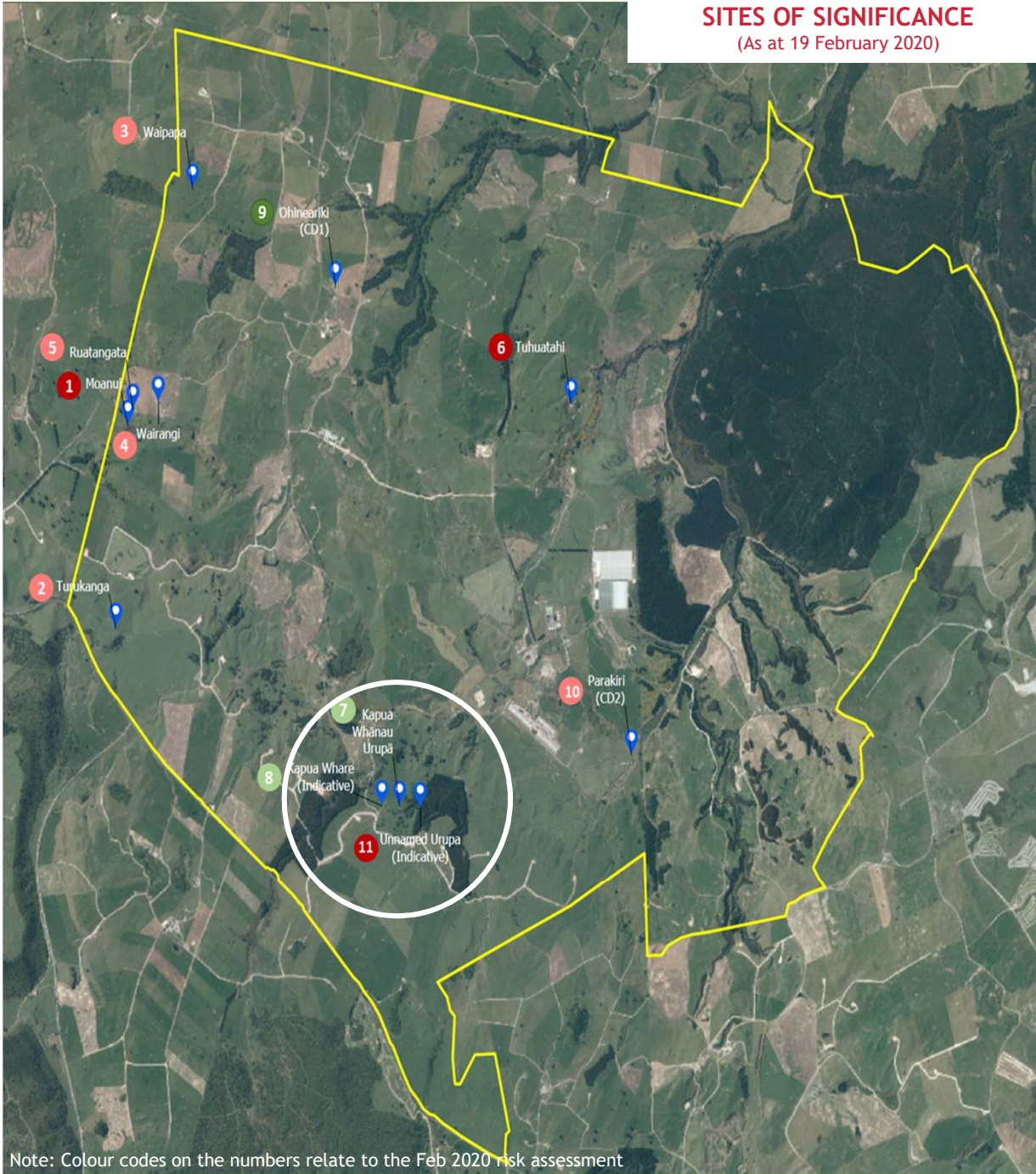


HISTORY

In the days of our ancestors, many iwi and hapu would bury their dead close to settlements or pa. After some time, they would disinter the bones of these tupuna and place them in secret locations for protection. These locations would often include caves, secret forest complexes, and remote islands. Today, the structure and tikanga of urupa is heavily influenced by Christianity and European cultural practices in regards to burial.

It is widely accepted by most iwi and hapu that urupa are tapu (sacred and with spiritual restriction). As such, several cultural protocols must be adhered to when entering or visiting an urupa. These cultural practices may include the requirement of specific karakia (incantations), the washing of hands when exiting the urupa, and the restriction of food and animals. Please consult the Culture and Legacy Team for further information in cultural practices.

SITES OF SIGNIFICANCE (As at 19 February 2020)



Note: Colour codes on the numbers relate to the Feb 2020 risk assessment

