



RUATANGATA

Sites of Significance Management Plan

TS005

RUATANGATA

Type of Site	Block Location (Tuaropaki E/Pouakani B1 etc.)	Amalgamated to Tuaropaki E Lands (Y/N)	Used by the Trust (Y/N)	GPS Co-ordinates for Site Access Point	Size (Approx.)
Urupā (Waahi Tapu)	Tuaropaki E	Y	N	-38.5073585° 175.9018992°	Area = 0.1 ha Perimeter = 0.13 km

ASSOCIATIONS & ENTITIES SITE IS LISTED WITH:

Taupō District Council	Listed as a Significant Natural Area (SNA)	Heritage New Zealand	NZ Archaeological Association
	Not Listed	Not Listed	Not Listed

CURRENT RISK ASSESSMENT (1 = Easy - 5 = hard):

Number on Map	Site Access (1-5)	Weather Dependent Access (Y/N)	Gradient & Terrain from Public Road	Biosecurity Risk (1-5)	Unintended risk of people accessing site once location is known (1-5)	Overall Risk Assessment
5	4	Y	2.1 km farm track, last 530 m across paddock	4	3	4

Name	Specifi Risk Assessment	Overall risk outcome
Ruatangata Urupā	Level of fitness: Low Additional notes: Site can be viewed from 4x4. No walking required.	Medium

SCHEDULED VISITS/MAINTENANCE:

Reason for Visit	Responsibility	Tasks to Undertake	Frequency
Site Maintenance	Farm Staff	Mowing	Six monthly - November & May
Site Maintenance	Farm Staff	Spraying the fence lines	Six monthly - November & May
Site Maintenance	Farm Staff	Fencing Upkeep	As required
Site Review	C&L Team	Visit, Assess & Report	Six monthly

RUATANGATA

KARAKIA

Te Reo Rangatira / The Maori Language:

Kia tau te manaakitanga ki runga ki tēnā
ki tēnā o tātau

Kia whakairia te tapu

Kia wātea ai te ara

Kia turuki whakataha ai

Kia turuki whakataha ai

Haumi e!

Hui e!

Taiki e!

Te Reo Pakeha / English:

Settle care and protection upon each of
us

Move the restrictions of sacredness

So that the pathway may be clear

Set aside personal issues and grievances

Set aside personal issues and grievances

Gather it!

Bind it!

It is done!



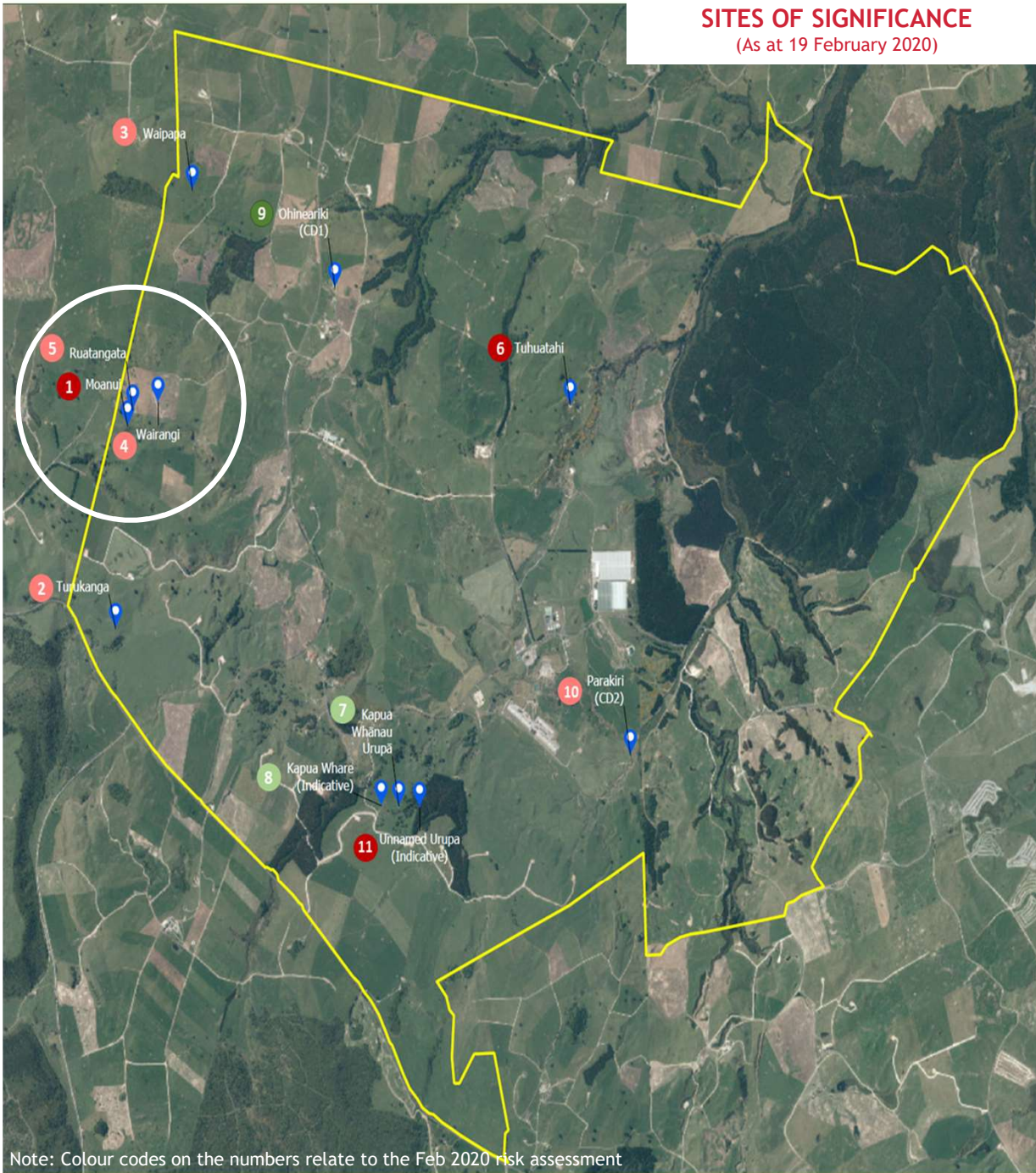
HISTORY



In the days of our ancestors, many iwi and hapu would bury their dead close to settlements or pa. After some time, they would disinter the bones of these tupuna and place them in secret locations for protection. These locations would often include caves, secret forest complexes, and remote islands. Today, the structure and tikanga of urupa is heavily influenced by Christianity and European cultural practices.

It is widely accepted by most iwi and hapu that urupa are tapu (sacred and with spiritual restriction). As such, several cultural protocols must be adhered to when entering or visiting an urupa. These cultural practices may include the requirement of specific karakia (incantations), the washing of hands when exiting the urupa, and the restriction of food and animals. Please consult the Culture and Legacy Team for further information in cultural practices.

SITES OF SIGNIFICANCE (As at 19 February 2020)



Note: Colour codes on the numbers relate to the Feb 2020 risk assessment

